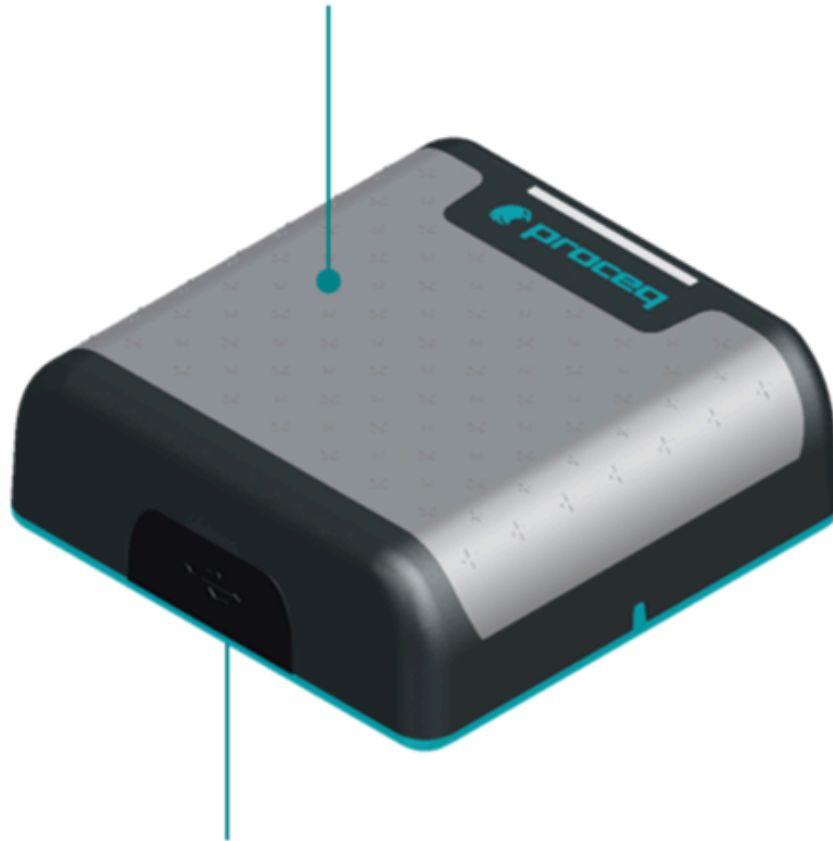
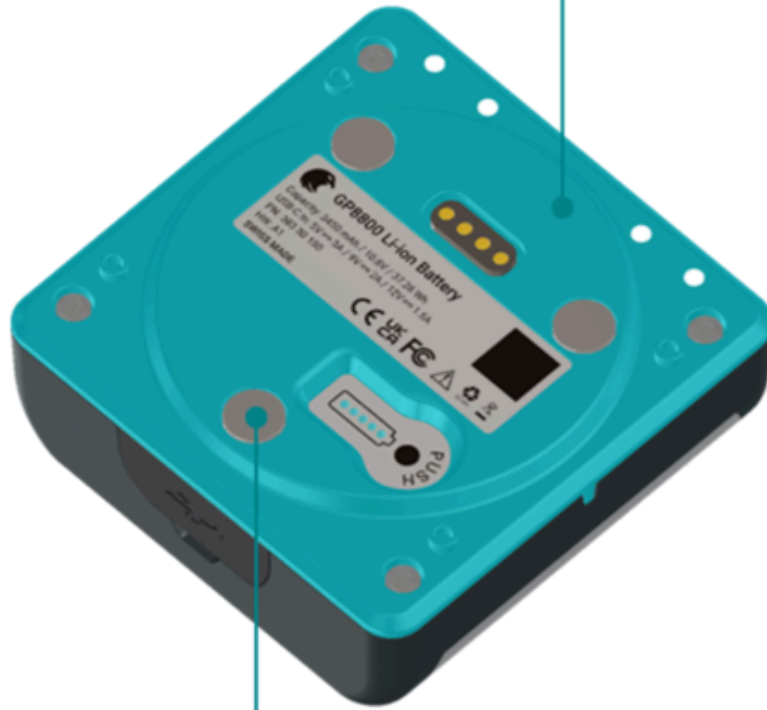


Advanced Battery Management for
optimized consumption
Safe and efficient charging



Flexible USB-C port
Accepts various chargers

Backward Compatible
with any GP8800



Enhanced magnet design
Stronger mechanical connection

Video clip of Zac Goodspeed from Butler Coring/Safecore Systems using the GP8800

Technical Specifications

| | |
|--------------------------|--|
| Energy capacity at 25°C | 37.26 Wh <small>x3 times more than previous battery</small> |
| Nominal voltage | 10.8 V |
| Typical capacity at 25°C | 3450 mAh |
| USB-C input | 5.0V – 3.0A 15W 9.0V – 2.0A 18W 12.0V – 1.5A 24W |
| Weight | 280g <small>just +90g from previous battery pack</small> |



[Terms Of Use](#)
[Website Data Privacy Policy](#)

Copyright © 2024 Screening Eagle Technologies. All rights reserved. The trademarks and logos displayed herein are registered and unregistered trademarks of Screening Eagle Technologies S.A. and/or its affiliates, in Switzerland and certain other countries.