



Figure 1. PT tendon locations inside the box beam



Figure 2. Proceq GP8100
GPR



Figure 3: Pundit PD8050

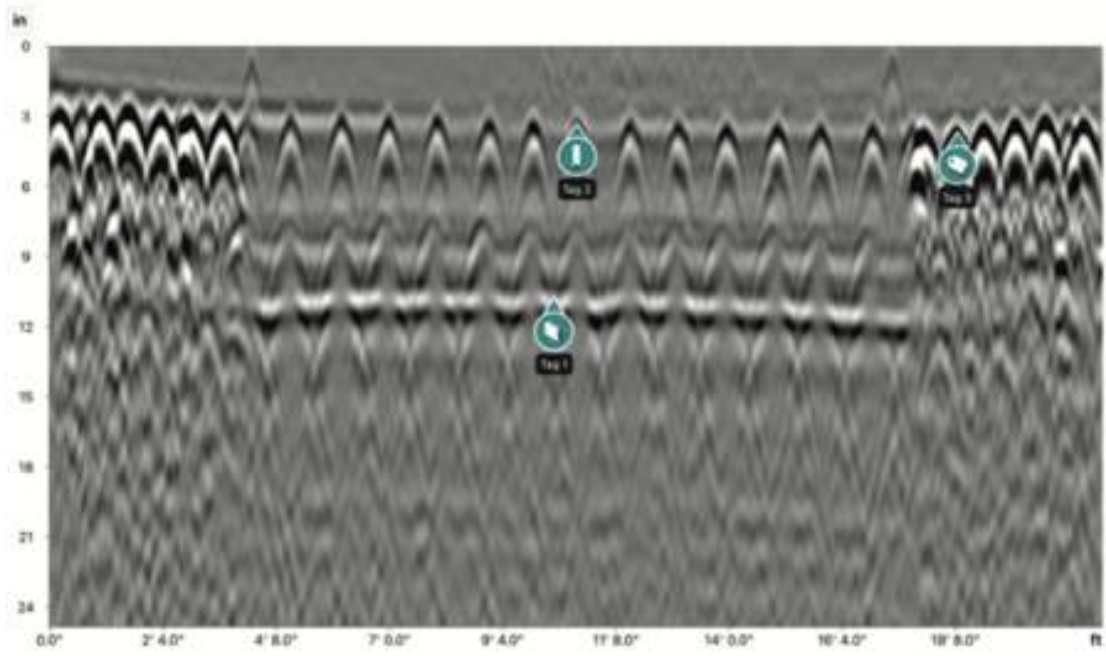


Figure 4: GPR scan across box girder width.

- Rebar
- Non Metallic
- Backwall
- Void
- Live Wire



Figure 5

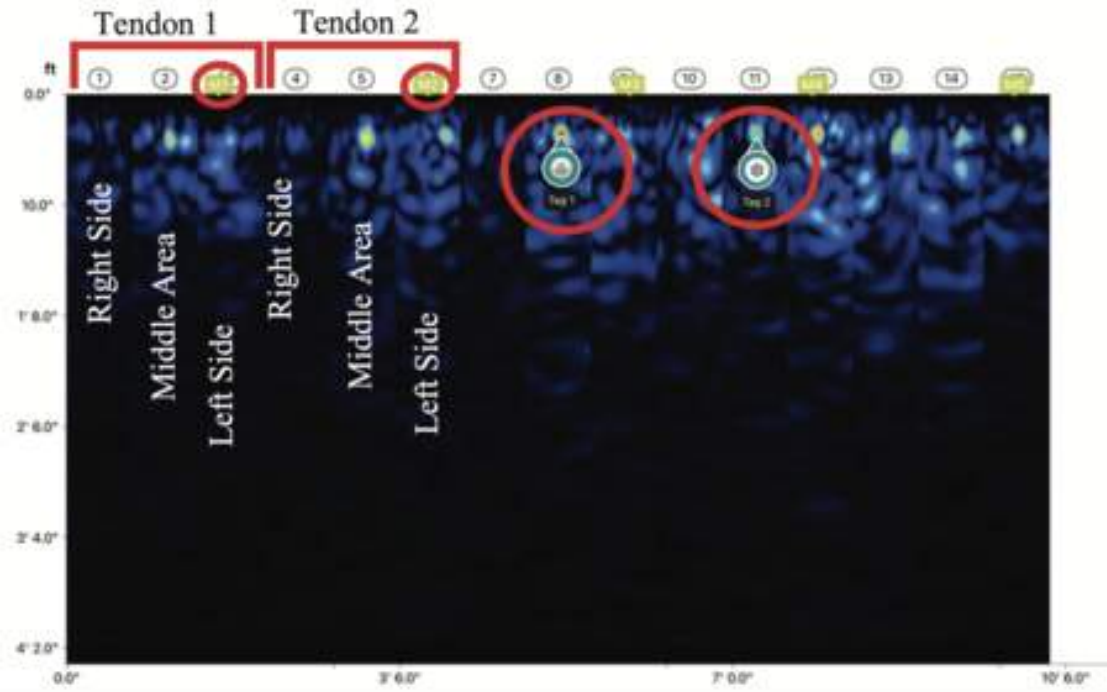







Figure 6

-  Tendon Ducts
-  Non Metallic
-  Backwall
-  Void
-  User Defined

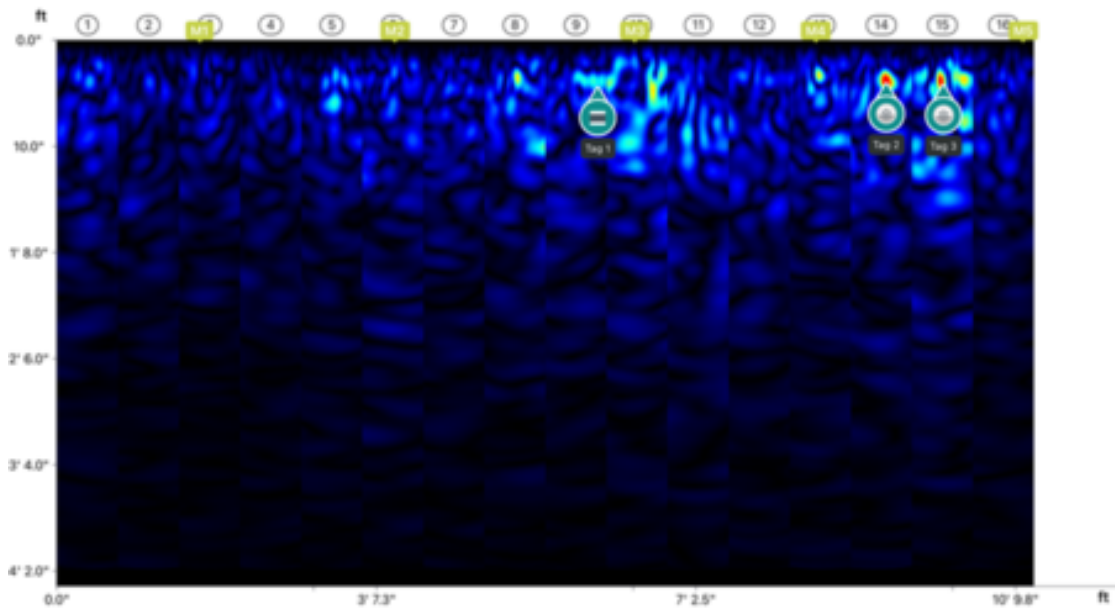


Figure 7: UPE scan

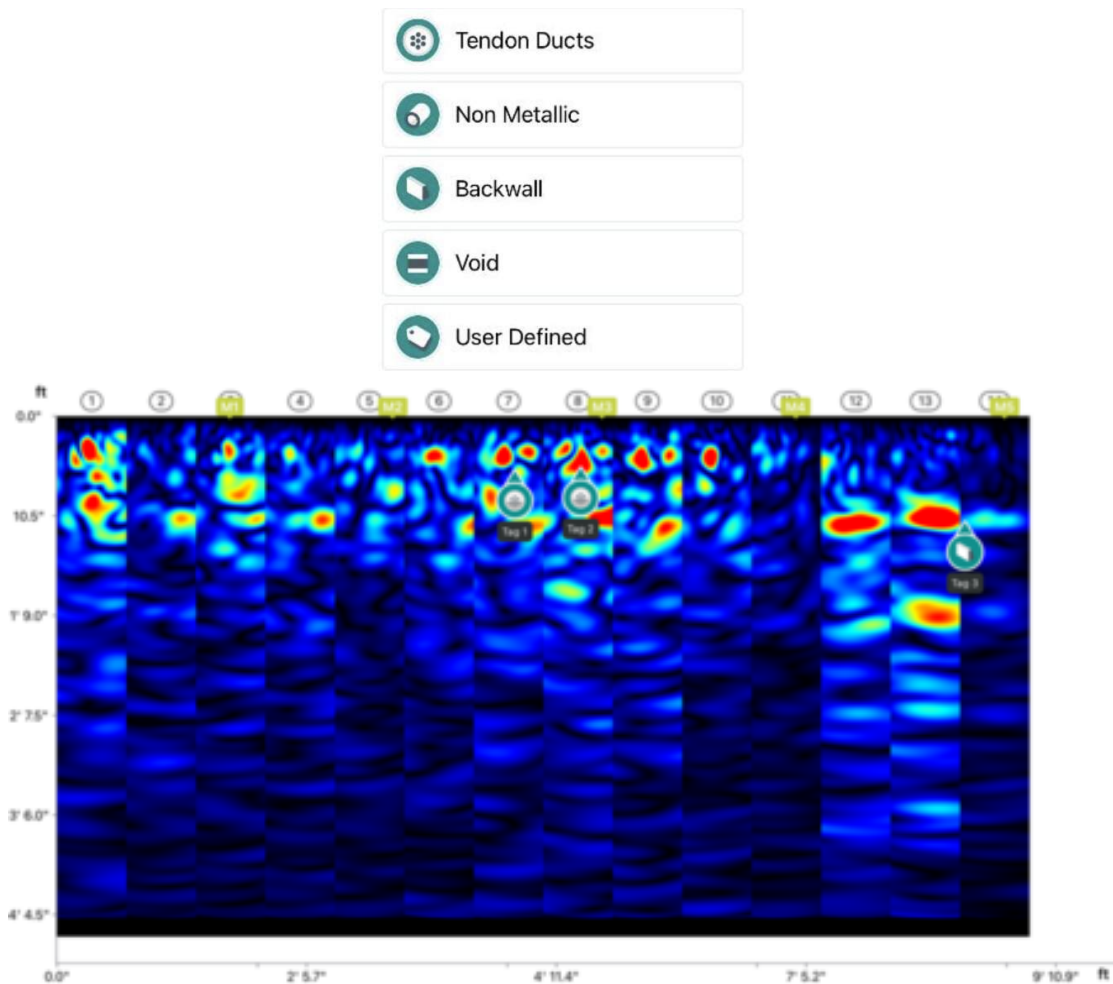
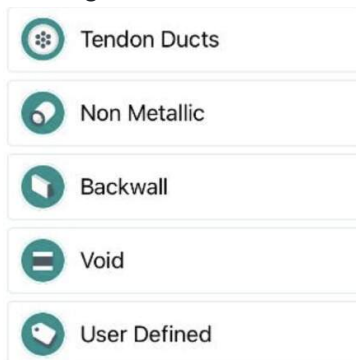


Figure 8: UPE scan



[Terms Of Use](#)
[Website Data Privacy Policy](#)

Copyright © 2024 Screening Eagle Technologies. All rights reserved. The trademarks and logos displayed herein are registered and unregistered trademarks of Screening Eagle Technologies S.A. and/or its affiliates, in Switzerland and certain other countries.